



WINCH CONTROL SYSTEMS



US ARMY TUG LT 801 CLASS

CONVERSIONS:

The US Army conversion of their LT-801 class tugs also includes NEW JonRie PLC based control systems.

STATE-OF -THE-ART CONTROLS:

JonRie's principles the original designers of the Towing System were selected to upgrade the Tension, Cable Indicator and annunciation of the Towing Winch to coincide with Tugs upgrades .



The console was designed and built to withstand the harsh marine environment yet provide State-of-the-Art components .



982 Whispering Oak Cir. Manahawkin
N.J. 08050

Phone: 609-978-3523

Fax: 609-978-4959

Email:bjdme@marinewinch.com

www.marinewinch.com



Barge Control Systems



CUSTOM WINCH CONTROL SYSTEMS:

Designed, Manufactured and Tested to produce the required results to insure a reliable system. Electronic design to integrate with today's Hydraulic systems.

RADIO CONTROLLED ANCHOR DROP SYSTEMS:

System Design to produce state-of-the-art controls for radio control applications.



CONTROL CONSOLES:

Designed and built to withstand the harsh marine environment.



982 Whispering Oak Cir. Manahawkin
N.J. 08050

Phone: 609-978-3523
Fax: 609-978-4959
Email: bjdme@aol.com



JONRIE INTERTECH, LLC



Winch Control Systems



CUSTOM WINCH CONTROL SYSTEMS:

Designed, Manufactured and Tested to produce the required results to insure a reliable system. Electronic design to integrate with today's Hydraulic systems.

PLC PROGRAMMING:

System Design to produce state-of-the-art controls for your winches and Hydraulic systems.



INTECH MARINE SERVICES, LLC

Engine Room Indication & Alarm Systems: Touch Screen, PLC based and Pilot Light Conventional Systems



Our combined efforts to bring State-of- the –Art Marine controls to the Tug & Barge Industry

982 Whispering Oak Cir.
Manahawkin, NJ 08050

Phone: 609-978-3523
Fax: 609-978-4959
Email: bjdme@marinewinch.com

215 Research Dr. Suite 103
Chesapeake, VA 23320

Phone 757-549-1143
Fax 757-549-1174
E mail IMSVaBch@aol.com



JONRIE INTERTECH, LLC



Winch Control Systems



CUSTOM WINCH CONTROL SYSTEMS:

Designed, Manufactured and Tested to produce the required results to insure a reliable system. Electronic design to integrate with today's Hydraulic systems.

PLC PROGRAMMING:

System Design to produce state-of-the-art controls for your winches and Hydraulic systems.

CONTROL CONSOLES:

Designed and built to withstand the harsh marine environment.



982 Whispering Oak Cir. Manahawkin
N.J. 08050

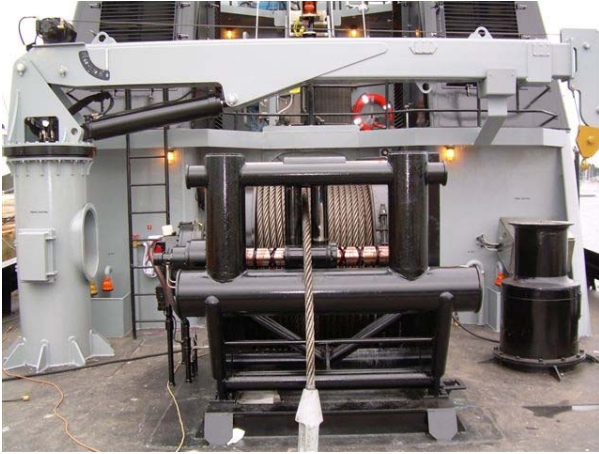
Phone: 609-978-3523
Fax: 609-978-4959
Email: bjdme@aol.com



JONRIE INTERTECH, LLC



**MARINE TOWING WINCHES
SYSTEM ENGINEERING**



SALES

JonRie InterTech LLC
982 Whispering Oak Cir.
Manahawkin, N.J. 08050

Phone: 609-978-3523
Fax: 609-978-4959
Email: bjdme@aol.com

HALLMAR LLC
1037 Creek Ct.
Mandeville, LA 70448

Phone: 985-373-1110
Fax: 985-626-1873
Email: chall@marinewinch.com

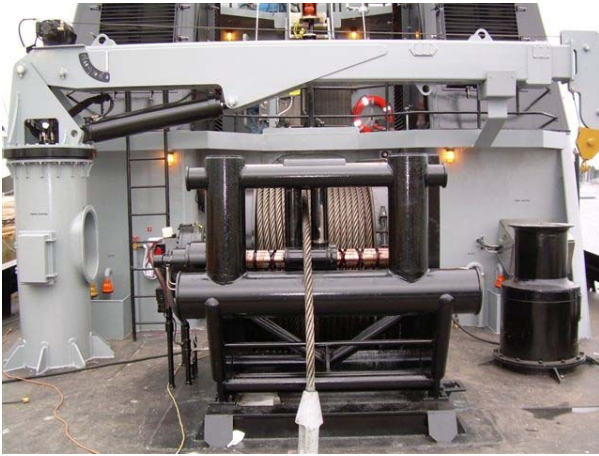
WWW.MARINEWINCH.COM



JONRIE INTERTECH, LLC



**MARINE TOWING WINCHES
SYSTEM ENGINEERING**



JonRie InterTech LLC
982 Whispering Oak Cir.
Manahawkin, N.J. 08050

Phone: 609-978-3523
Fax: 609-978-4959
Email: bjdme@aol.com

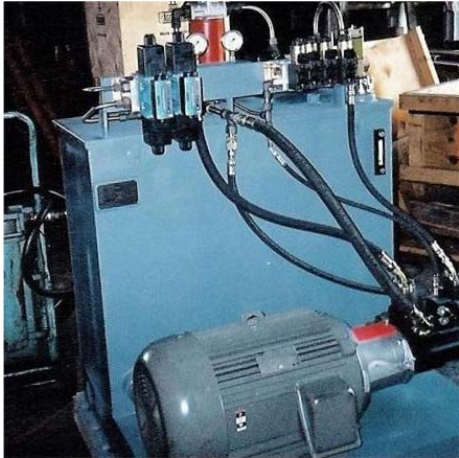
WWW.MARINEWINCH.COM



JONRIE INTERTECH, LLC



Custom Hydraulic Power Units



HYDRAULICS POWER UNITS:

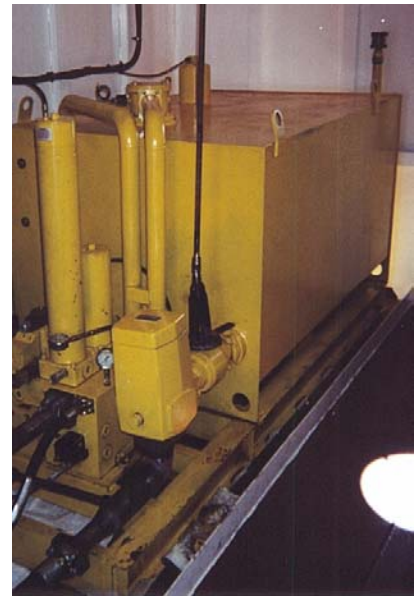
Power Units Designed, Fabricated and shop Tested.
From 5HP to 500HP, Diesel driven or Electric. Open
loop or closed loop design. Modular units or Skid
mounted.

FIELD SERVICES:

Hydraulic power units field tested and com-
missioned, troubleshooting and repair.

SYSTEM DESIGN:

Complete system design from piping to hose plans.
Function design and control systems, test plans and
flushing procedures. Certified Fluid Power Engineer.



982 Whispering Oak Cir. Manahawkin
N.J. 08050

Phone: 609-978-3523
Fax: 609-978-4959
Email: bjdme@aol.com