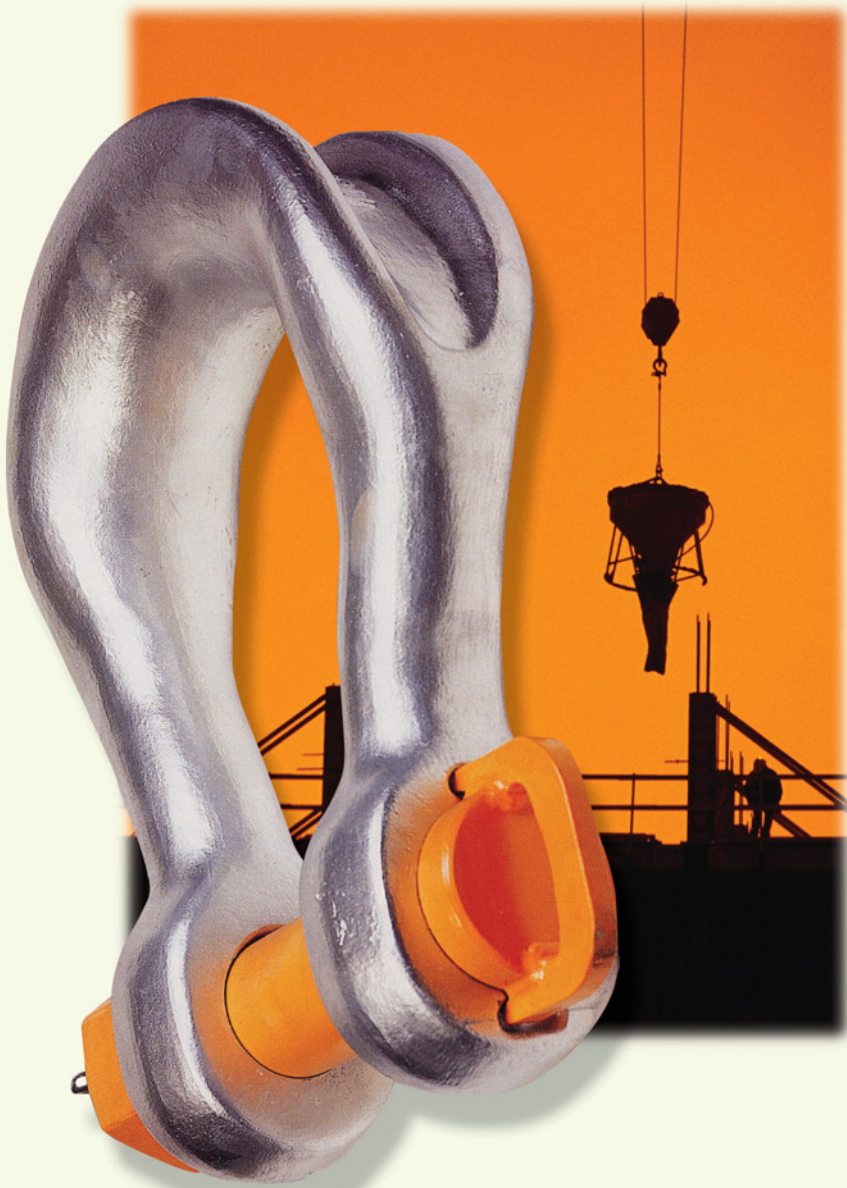




오 성 산 업

LB FORGES LE BÉON





Our references

Forges LE BEON is active in various industries worldwide, dedicated to the service of our clients, who are recognised as specialists in their field.

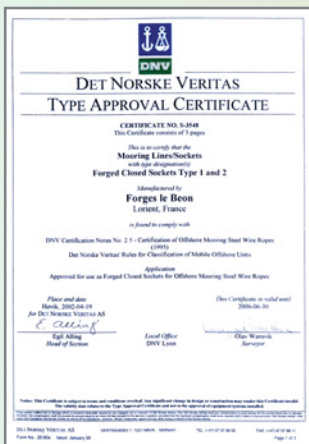
Our presence in the Shipbuilding, Oil and Gas industries is very important to our development and many of our best customers are engineering contractors.

Forges LE BEON industrial Department is especially prominent in Western Europe, where activities are focused on iron, steel and machining industries, where products are designed and manufactured to meet specific requirements and applications. Customers in this sector are generally iron foundries, steel mills and their sub-contractors, boiler makers and machining specialists.

Our Fishing and Marine Department covers both coastal and deep sea applications, where our clients include fishing companies and cooperatives, ship chandlers, and port authorities. We also design and supply complete mooring systems for marinas and small boat harbours.

Our range of standard products is handled by distributors in all major commercial markets around the world, whilst products for offshore and oilfield applications are managed by dedicated Agents.

Certifications and Approvals

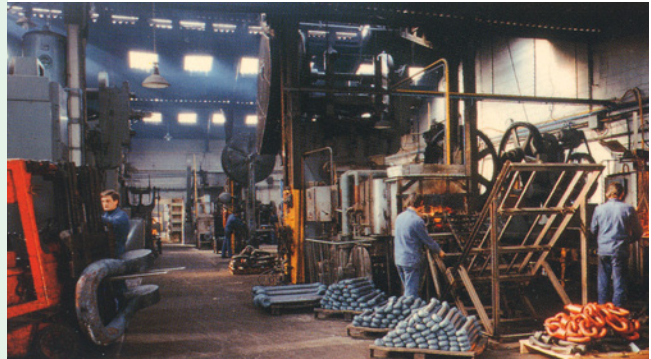
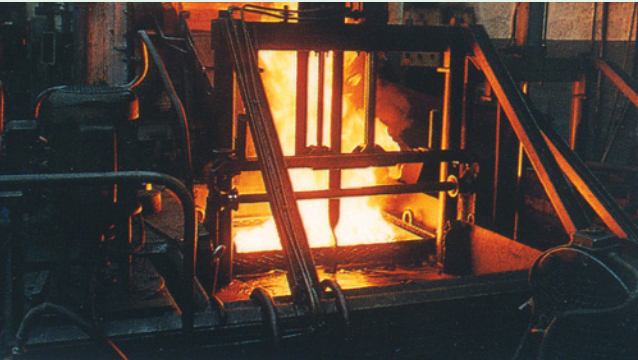




Our Production Workshops

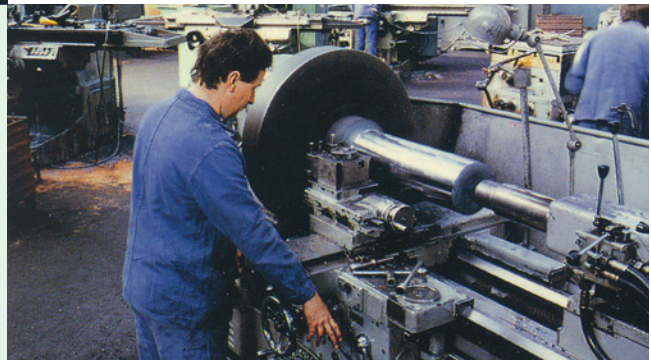
FORGING

All kinds of part with all steel grades



HEAT TREATMENT

Normalizing annealing, water or oil quenching



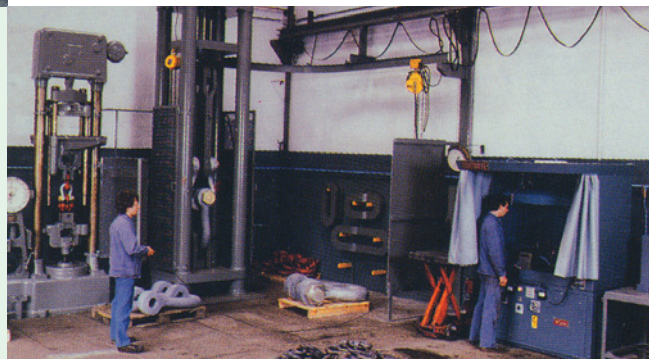
CONSTRUCTION

Manual or automatic weldings conducted by highly qualified personnel



MACHINING

Milling, turning



QUALITY CONTROL

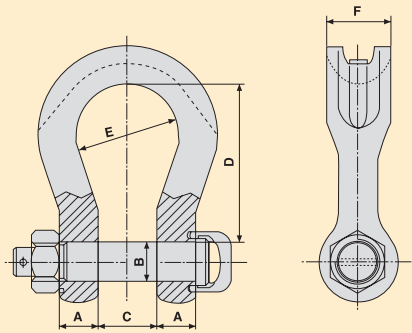
Dimensional, non-destructive tests



Sling Shackles

Forging tolerances $\pm 5\%$

Safety factor = 5



Certificate; traction test:

-2×W.L.L. up to 300T.

-1,33×W.L.L. up to 1500T.

Embossed marking in the bending : LE BEON & WLL

Material : Forged alloy steel for all W.L.L.

Finish : Galva paint on bodies and orange paint on pins.



ML.G.646

W.L.L. M.T.	A	B	C	D	E	F	weight (kg)
75TON	70	70	105	290	186	120	67
125 TON	85	80	130	365	220	150	110
150 TON	89	95	140	390	250	170	160
200 TON	100	105	150	480	276	205	220
250 TON	110	120	170	540	300	240	320
300 TON	122	134	185	600	350	265	350
400 TON	145	160	220	575	370	320	635
500 TON	160	180	250	680	450	340	803
600 TON	170	200	275	740	490	370	1031
700 TON	190	215	300	750	540	400	1260
800 TON	200	230	325	850	554	420	1710
900 TON	220	255	350	850	584	440	1980
1000 TON	240	270	380	850	614	460	2350
1250 TON	260	300	430	930	644	530	2950
1500 TON	280	320	460	950	680	560	3500

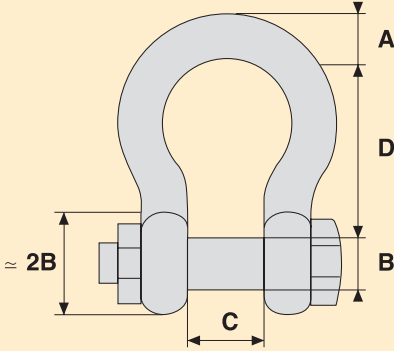
(For other dimensions, please refer to us)



Bolt Type Super Shackles

Forging tolerances $\pm 5\%$

U.S. Federal Specification (PR-C-271)



Safety factor = 5.5

From W.L.L. 140 T. : Bolt with straight head & handle grip.

Pins : orange paint

Finish : Galvanized up to W.L.L. 110 T.
and Galva paint from W.L.L. 140 T.

Body : Alloy steel

Pin : Alloy steel



ML.G.546

Bolt type super shackles with thin head bolt-nut, with cotter pin..RR-C-271

W.L.L. M.T.	SIZE A		B	C	D	O	weight (kg)
	inches	mm					
30.000	1. 1/2	38	42	60	146	99	8.800
40.000	1. 3/4	45	51	74	178	126	15.500
55.000	2.	50	57	83	197	138	20.650
85.000	2. 1/2	65	70	105	254	180	41.000
120.000	3.	76	82	127	330	190	65.500
140.000	3. 1/2	89	95	146	381	238	109.500
200.000	4.	102	108	165	400	275	160.000
250.000	4. 3/8	120	130	175	500	290	235.000
300.000	4. 3/4	125	140	200	540	305	285.000

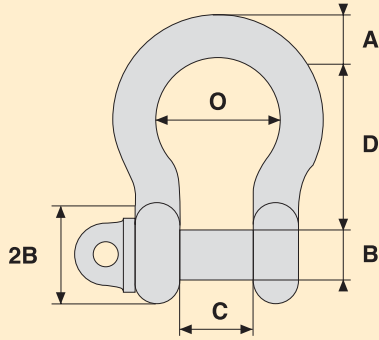
(For other dimensions, please refer to us)



Anchor Shackles

Forging tolerances $\pm 5\%$

U.S. Federal Specification (RR-C-271)



Safety factor = 6 up to 85 T. Above S.F. = 5

From W.L.L. 120 T. : Bolt with straight head & handle grip.

Pins : orange paint

Finish : Galvanized up to W.L.L. 120 T.

and Galva paint from W.L.L. 150 T.

From W.L.L. 2 T. up to 85 T. : High Tensile Steel

From W.L.L. 120 T. and above : Alloy Steel



ML.G.344

Screw pin anchor shackles meet Federal Specification RR-C-271.



ML.G.346

Bolt type anchor shackles with thin head bolt-nut, with cotter pin..RR-C-271.

W.L.L. M.T.	SIZE A		B	C	D	O	weight (kg)	
	inches	mm					MLG 344	MLG 346
2.000	.1/2	13	16	22	51	32	0.360	0.440
3.250	.5/8	16	19	27	64	43	0.620	0.790
4.750	.3/4	19	22	31	76	51	1.210	1.260
6.500	.7/8	22	25	36	83	58	1.480	1.880
8.500	1.	25	28	43	95	68	2.500	2.790
9.500	1. 1/8	28	32	47	108	75	3.465	3.800
12.000	1. 1/4	32	35	51	115	83	4.500	5.260
13.500	1. 3/8	35	38	57	133	92	6.600	7.000
17.000	1. 1/2	38	42	60	146	99	7.150	8.800
25.000	1. 3/4	45	50	74	178	126	13.240	15.000
35.000	2.	50	57	83	197	138	19.000	20.650
42.500	2. 1/4	57	65	95	222	160	28.000	29.300
55.000	2. 1/2	65	70	105	254	180	38.500	41.000
85.000	3.	75	83	127	330	190	62.300	64.500
120.000	3. 1/2	89	95	146	381	238		109.500
150.000	4.	102	108	165	400	275		160.000
200.000	4. 3/8	120	130	175	500	290		235.000
250.000	4. 3/4	125	140	200	540	305		285.000
300.000	5. 1/8	135	150	200	600	305		340.000
400.000	5. 7/8	165	175	225	650	325		570.000
500.000	6. 3/4	175	185	250	700	350		685.000
600.000	7. 1/2	195	205	275	700	375		880.000
700.000	7. 7/8	205	215	300	730	400		980.000
800.000	8. 1/4	210	220	300	730	400		1110.000
900.000	8. 21/32	220	230	320	750	420		1295.000
1.000.000	9.	230	240	340	750	420		1475.000
1.200.000	9. 27/32	250	280	400	840	500		1900.000
1.500.000	10. 1/4	260	325	460	870	600		2800.000

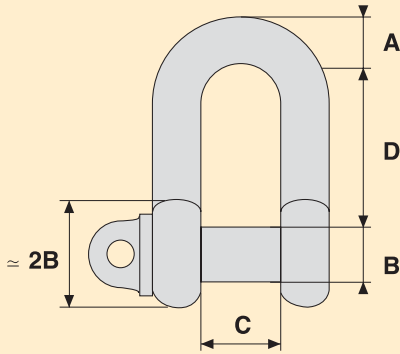
(For other dimensions, please refer to us)



Chain Shackles

Forging tolerances $\pm 5\%$

U.S. Federal Specification (RR-C-271)



Safety factor = 6 up to 85 T. Above S.F. =5
 From W.L.L. 120 T. : Bolt with straight head & handle grip.
 Pins : orange paint

Finish : Galvanized up to W.L.L. 120 T.
 and Galva paint from W.L.L. 150 T.

From W.L.L.2 T. up to 85 T. : High Tensile Steel
 From W.L.L. 120 T. and above : Alloy Steel



Screw pin chain shackles meet Federal Specification RR-C-271



Bolt type chain shackles with thin head bolt-nut with cotter pin..RR-C-271

W.L.L. M.T.	SIZE A		B	C	D	weight (kg)	
	inches	mm				MLG 330	MLG 336
2.000	.1/2	13	16	22	43	0.340	0.380
3.250	.5/8	16	19	27	51	0.590	0.660
4.750	.3/4	19	22	31	59	0.950	1.050
6.500	.7/8	22	25	36	73	1.300	1.460
8.500	1.	25	28	43	85	2.300	2.590
9.500	1. 1/8	28	32	47	90	3.000	3.340
12.000	1. 1/4	32	35	51	94	4.250	4.740
13.500	1. 3/8	35	38	57	115	5.600	6.190
17.000	1. 1/2	38	42	60	127	7.000	7.600
25.000	1. 3/4	45	50	74	149	12.250	12.820
35.000	2.	50	57	83	171	17.160	18.160
42.500	2. 1/4	57	65	95	190	26.500	27.800
55.000	2. 1/2	65	70	105	203	32.600	35.100
85.000	3.	75	80	127	230	57.000	60.000
120.000	3. 1/2	89	95	146	267		93.000
150.000	4.	102	108	165	400		145.000
200.000	4. 3/8	120	130	175	500		180.000
250.000	4. 3/4	125	140	200	540		225.000
300.000	5. 1/8	135	150	200	600		305.000
400.000	5. 7/8	165	175	225	650		540.000
500.000	6. 3/4	175	185	250	700		580.000
600.000	7. 1/2	195	205	275	700		850.000
700.000	7. 7/8	205	215	300	730		920.000
800.000	8. 1/4	210	220	300	730		990.000
900.000	8. 21/32	220	230	320	750		1165.000
1000.000	9.	230	240	340	750		1315.000
1200.000	9. 27/32	250	280	400	840		1700.000
1500.000	10. 1/4	260	325	460	840		2500.000

(For other dimensions, please refer to us)



Forges Le Beon

Specialist in Taylor Made Forging

FREE FORGING

Up to unit weight of 3000 kg
Taylor made products
Unique piece or small series
All types of steel & stainless steel
15 mechanical spindle presses
from 150T up to 2000T
Draft forged products

DROP FORGING

Manufacture of drop forging
All types of steel from 300
grs to 300 kg
Maximum length : 600 mm
Maximum width :250 mm

OPEN DIE FORGING

Shackle heads swaging
Shackle body drawing
Maximum weight : 700 kg



Bail



Triplate



Rov Shackle



Swivel double jaw-chain



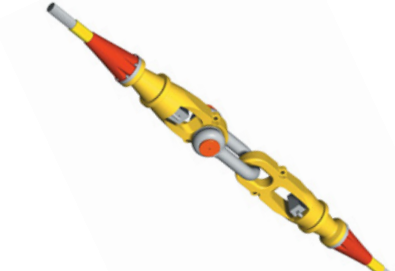
Connection for chain - socket



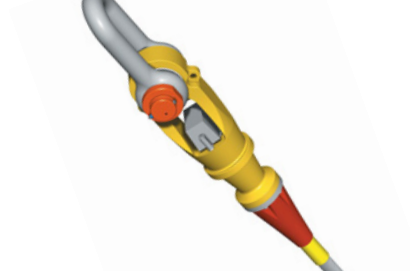
Mechanical Swivel eye - eye



Bridle Mooring



Closed eye socket
- Joining shackle
- Closed Socket Assembly



Closed eye socket
- Joining Shackle Assembly

***And others ...on request.**



STEEL FORGINGS MANUFACTURE
FOR MARINE - INDUSTRY & OFFSHORE
7, boulevard Louis-Nail - C.P. 19 56326 LORIENT Cedex - FRANCE
Tel. 33 2 97 37 22 00 Fax. 33 2 97 37 12 15
E-mail : info@le-beon.com
http://www.le-beon.com