

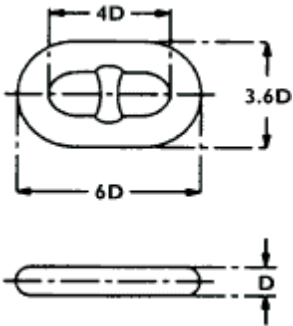


## ANCHOR CHAIN

Stud link anchor chain dimensions are standardized to conform with charts published by various classification societies (Lloyds, ABS, DNV etc.) within tolerances. To determine chain link size the following is applicable:

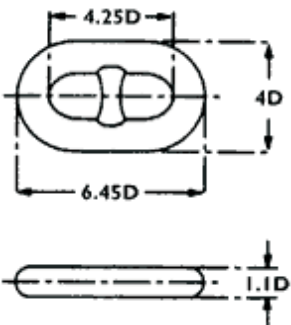


### Common Link



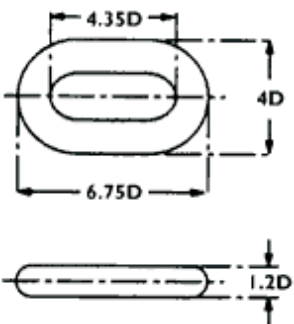
- 6 x Chain Diameter (D) = Length
- 3.6 x Chain Diameter (D) = Width
- 4 x Chain Diameter (D) = Inside Length
- 1 x Chain Diameter (D) = Diameter

### Enlarged Link

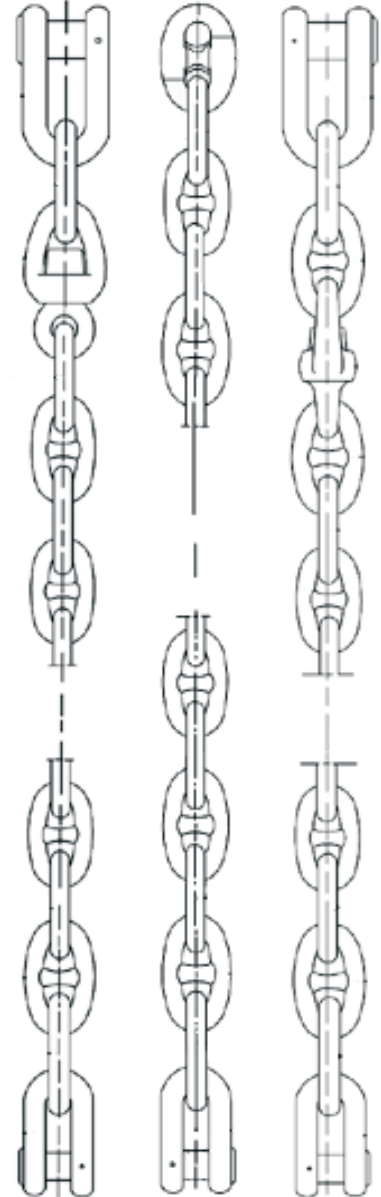


- 6.45 x Chain Diameter (D) = Length
- 4 x Chain Diameter (D) = Width
- 4.25 X Chain Diameter (D) = Inside Length
- 1.1 x Chain Diameter (D) = Diameter

### End Link



- 6.75 x Chain Diameter (D) = Length
- 4 x Chain Diameter (D) = Width
- 4.35 X Chain Diameter (D) = Inside Length
- 1.2 x Chain Diameter (D) = Diameter





## ABS Proof & Breaking Loads



| Chain Diameter |     | Grade 2           |                   | Grade 3           |                   | Oil Rig Quality   |                   | Weight per 15 Fathom Shot (Appx) Pounds |
|----------------|-----|-------------------|-------------------|-------------------|-------------------|-------------------|-------------------|---|
| Inches         | mm  | Proof Load Pounds | Break Load Pounds | Proof Load Pounds | Break Load Pounds | Proof Load Pounds | Break Load Pounds |   |
| 5/8            | 16  | 23,745            | 33,220            | 33,220            | 47,465            | ~                 | ~                 | 365                                     |
| 3/4            | 19  | 34,000            | 47,600            | 47,600            | 68,000            | ~                 | ~                 | 480                                     |
| 7/8            | 22  | 46,000            | 64,400            | 64,400            | 91,800            | ~                 | ~                 | 660                                     |
| 1              | 25  | 59,700            | 83,600            | 83,600            | 119,500           | 84,000            | 129,000           | 860                                     |
| 1 1/8          | 29  | 75,000            | 105,000           | 105,000           | 150,000           | 106,000           | 161,000           | 1,080                                   |
| 1 1/4          | 32  | 92,200            | 129,000           | 129,000           | 184,000           | 130,000           | 198,000           | 1,350                                   |
| 1 5/16         | 33  | 101,500           | 142,000           | 142,000           | 203,000           | ~                 | ~                 | 1,490                                   |
| 1 3/8          | 34  | 111,000           | 155,000           | 155,000           | 222,000           | 157,000           | 235,000           | 1,630                                   |
| 1 1/2          | 38  | 131,000           | 183,500           | 183,500           | 262,000           | 185,000           | 280,000           | 1,940                                   |
| 1 5/8          | 42  | 153,000           | 214,000           | 214,000           | 306,000           | 216,000           | 325,000           | 2,240                                   |
| 1 3/4          | 44  | 176,000           | 247,000           | 247,000           | 352,000           | 249,000           | 380,000           | 2,590                                   |
| 1 7/8          | 48  | 201,000           | 281,000           | 281,000           | 402,000           | 285,000           | 432,000           | 2,980                                   |
| 2              | 51  | 227,000           | 318,000           | 318,000           | 454,000           | 322,000           | 488,000           | 3,360                                   |
| 2 1/8          | 54  | 255,000           | 357,000           | 357,000           | 510,000           | 362,000           | 548,000           | 3,790                                   |
| 2 1/4          | 58  | 284,000           | 396,000           | 396,000           | 570,000           | 403,000           | 610,000           | 4,250                                   |
| 2 3/8          | 60  | 314,000           | 440,000           | 440,000           | 628,000           | 447,000           | 675,000           | 4,730                                   |
| 2 1/2          | 64  | 346,000           | 484,000           | 484,000           | 692,000           | 492,000           | 744,000           | 5,270                                   |
| 2 5/8          | 67  | 379,000           | 530,000           | 530,000           | 758,000           | 540,000           | 813,000           | 5,820                                   |
| 2 3/4          | 70  | 413,000           | 578,000           | 578,000           | 826,000           | 590,000           | 885,000           | 6,410                                   |
| 2 7/8          | 73  | 449,000           | 628,000           | 628,000           | 897,000           | 640,000           | 965,000           | 7,020                                   |
| 3              | 76  | 485,000           | 679,000           | 679,000           | 970,000           | 693,000           | 1,045,000         | 7,650                                   |
| 3 1/8          | 79  | 523,000           | 732,000           | 732,000           | 1,046,000         | 748,000           | 1,128,000         | 8,320                                   |
| 3 1/4          | 83  | 562,000           | 787,000           | 787,000           | 1,124,000         | 804,100           | 1,210,000         | 9,010                                   |
| 3 3/8          | 86  | 602,000           | 843,000           | 843,000           | 1,204,000         | 862,200           | 1,296,000         | 9,730                                   |
| 3 1/2          | 90  | 643,000           | 900,000           | 900,000           | 1,285,000         | 922,000           | 1,383,100         | 10,500                                  |
| 3 5/8          | 92  | 685,000           | 958,000           | 958,000           | 1,369,000         | 1,021,000         | 1,566,000         | 11,300                                  |
| 3 3/4          | 95  | 728,000           | 1,019,000         | 1,019,000         | 1,455,000         | 1,120,000         | 1,750,000         | 12,000                                  |
| 3 7/8          | 98  | 772,000           | 1,080,000         | 1,080,000         | 1,543,000         | 1,205,000         | 1,863,000         | 12,900                                  |
| 4              | 102 | 816,000           | 1,143,000         | 1,143,000         | 1,632,000         | 1,298,000         | 1,996,500         | 13,700                                  |

• Other sizes available upon request.

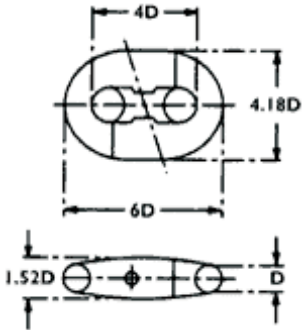


## JOINING LINKS

Joining links are used to connect shots of chain together, chain to shackles, chain to anchors or chain to mooring lines. There are several different styles available and most are detachable and assembled onsite.



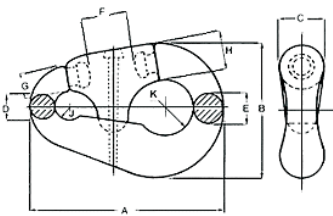
### Kenter Joining Link



Kenter links consist of two halves which are coupled together, and held together by a stud. The stud is then secured by a taper pin and lead pellet. Used to join chain to chain.



### Anchor Joining Link

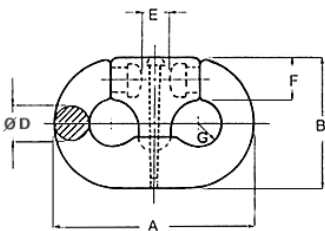


Anchor links consist of three pieces which are coupled together, and then secured by a taper pin and lead pellet. Used to join chain to anchors.

Please check with Wesco Industries for dimensions.



### Chain Joining Link



Anchor links consist of three pieces which are coupled together, and secured by a taper pin and lead pellet. Used to join chain to anchor.

Please check with Wesco Industries for dimensions.





## SHACKLES

Shackles are versatile joining pieces that can be used for connecting chain to plates, chocks, mooring lines, buoys and other fittings. A wide range is available.



### Standard Load Rated Shackles



Safety Anchor Shackle

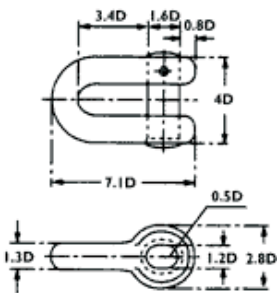
Standard safety shackles are available from 1/2" to 4" in size. They have WLL ranging from 2 Ton through 150 Ton. Generally shackles are Hot Dipped Galvanized and have an ultimate strength of 6 times the Working Load Limit.

Please check with Wesco Industries for dimensions.



Safety Chain Shackle

### Joining Shackles

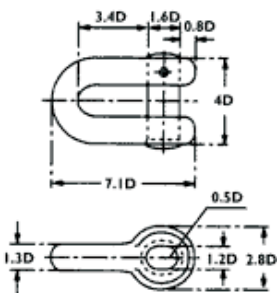


Joining shackles have an oval pin and are available in a wide range of sizes. They are generally supplied in a "black/self colour" finish.

Please check with Wesco Industries for sizes available.



### Anchor/End Shackles



Anchor shackles have an oval pin and are available in a wide range of sizes. They are generally supplied in a "black/self colour" finish.

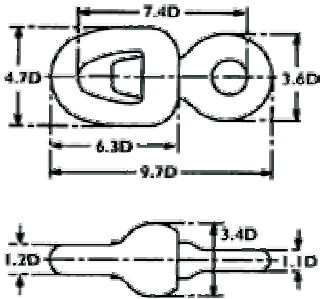
Please check with Wesco Industries for sizes available.





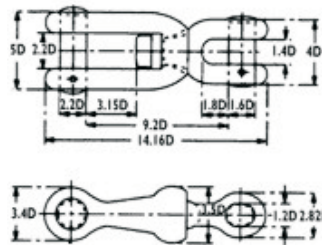
## SWIVELS

Swivels are designed to be installed along the length of chain to prevent twisting. They can also be used to join chain to hardware and fittings.



### Anchor Chain Swivel

Swivels come complete with a common link at each end. They are designed to be installed along the length of anchor or mooring chain.



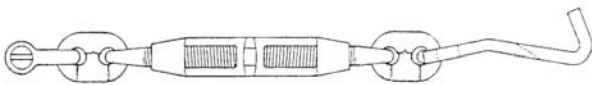
### Jaw & Jaw Swivel

Are designed to be installed along the length of anchor chain or wire and connect to an Anchor. One end accepts the Anchor chain or spelter socket while the other end will accept the shank of an Anchor.

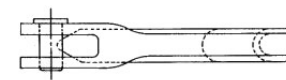
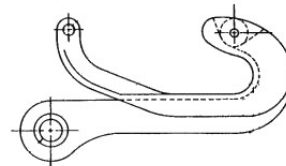


## CHAIN STOPPERS

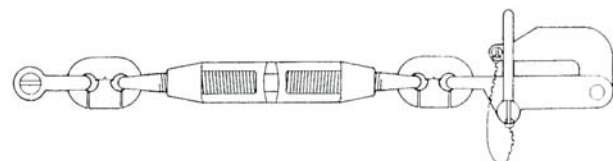
The main function of the chain stoppers is to assist in securing an anchor at the hawse pipe. A range of sizes is available, please contact Wesco Industries for further details.



### Devils Claw Chain Stop with Turnbuckle



### Commercial Pelican Hook



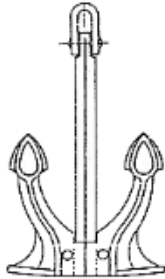
### Pelican Hook Chain Stop with Turnbuckle



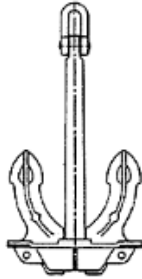


## ANCHORS

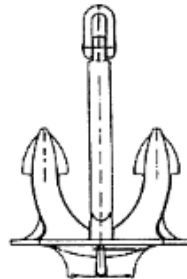
Anchors are available in a wide range of styles and sizes. The design of the anchor is influenced by the composition of the ocean floor: Mud (or silt), Sand, or Rock. For further information on suitable anchors for your application or availability of anchor types please contact Wesco Industries.



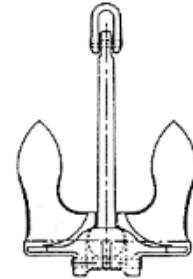
Spek



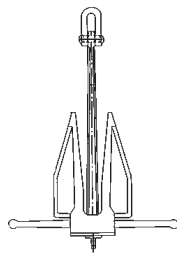
Hall



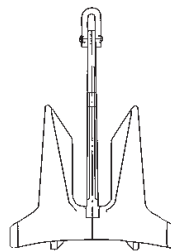
Union



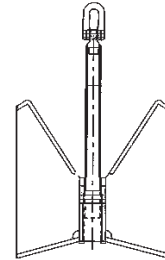
Baldt



Danforth



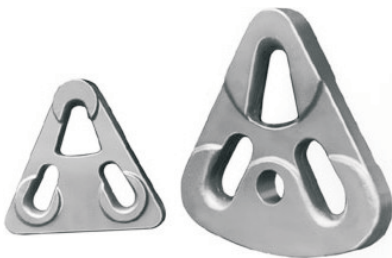
AC 14



Pool

## MARQUIP® TOWING PLATES

Marquip Towing plates have a patented design that lets you rig the bridle with only three shackles, eliminating the extra weight, cost, time and risk of the older flounder style plates. The No.2 plate features an extra hole for a tandem shackle to tow additional barges, or to haul in the bridle. They are available in 300,000lbs, 485,000lbs and 624,000lbs pull test capacities. Marquip extra heavy duty shackles to suit are also available.





# MOORING CHAIN & FITTINGS

Wesco Industries stock a range of open link Mooring chain for docks, marinas and buoys. Chain is available hot dip galvanized, and some sizes raw (self colour) finish.



## Mooring Chain

| Chain Size Inches | Finish         | Inside Link Dimension Inches | Breaking Strain Pounds | Weight per 100 ft. Pounds |
|-------------------|----------------|------------------------------|------------------------|---------------------------|
| 1/2               | H.D Galvanized | 2.05                         | 24,000                 | 134                       |
| 5/8               | H.D Galvanized | 2.52                         | 36,000                 | 230                       |
| 3/4               | H.D Galvanized | 4.15                         | 40,000                 | 450                       |
| 3/4               | Self Coloured  | 4.15                         | 40,000                 | 450                       |
| 1                 | H.D Galvanized | 4.15                         | 55,000                 | 860                       |



## Fittings & Accessories



Load Rated & Non Load Rated Anchor or Chain Shackles.



Galvanized Eyebolts & Eyenuts



Mooring Rope & Cordage Galvanized & Stainless Steel Wire Rope & Fittings