



## Svirveløjebolte

Indhold

Belastningstabel svirveløjebolt

Belastningstabel TAWGK

Flatpoint svirveløjebolt Grade 10

PLAW løftebeslag

Svirveløjebolt

Svirveløjebolt TAWGK



## Screw-on Attachments

Index

Flatpoint Swivel Eye Plate Grade 10

Load Diagram Screw-on Attachment Swivel

Load Diagram TAWGK

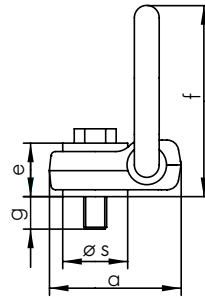
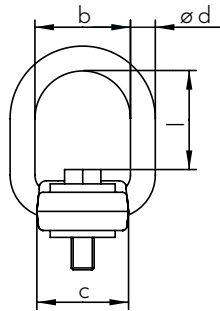
PLAW Lifting Point

Screw-on Attachment Swivel

Screw-on Attachment TAWGK



# Flatpoint Svirveløjebolt Grade 10 Flatpoint Swivel Eye Plate Grade 10



Meget flad og ekstremt god.  
360° drejbar.  
Ring kan fastholdes i bestemt position.  
90° svingbar.  
Lav byggehøjde.

Very flat and extremely good.  
Rotates through 360°.  
Lockable member.  
Admissible swivel range of take-up member 90°.  
Very low profile.

Art. No.	Type	Screw mm	Torque Nm	a mm	b mm	c mm	d mm	e mm	f mm	g mm	l mm	s mm	Weight kg
03-70130001040	FP 0,5	M10x40	40	69	50	48	13	28	100	15	54	34	0,70
03-70130001245	FP 0,8	M12x45	65	69	50	48	13	28	100	20	53	34	0,71
03-70130011655	FP 1,5	M16x55	160	69	50	48	13	28	100	30	51	34	0,72
03-70130022070	FP 2,5	M20x70	300	69	50	48	13	28	100	42	46	34	0,73
03-70130042480	FP4	M24x80	500	104	76	72	18	39	147	41	74	58	2,60
03-70130052780	FP 5	M27x80	770	104	76	72	18	39	147	41	72	58	2,70
03-70130063090	FP 6	M30x90	1000	104	76	72	18	39	147	51	70	58	2,75

Skruer i.h.t. EN 24014 (DIN 931) – Klasse 10.9, testet f. revner

Bolt pursuant to EN 24014 (DIN 931) – strength class 10.9, fracture-tested.

Kind of attachment	1		2		2		3 or 4	
Number of lifting points	1	1	2	2	2	2	3 or 4	3 or 4
Inclination angle	0°	90°	0°	90°	0°-45°	45°-60°	0°-45°	45°-60°

Type	Thread	WLL t	WLL t	WLL t	WLL t	WLL t	WLL t	WLL t	WLL t
FP 0,5	M 10	0,5	0,7	1	1,4	0,7	0,5	1	0,7
FP 0,8	M 12	0,8	1,25	1,6	2,5	1,12	0,8	1,6	1,12
FP 1,5	M 16	1,5	2,12	3	4	2	1,5	3,15	2,24
FP 2,5	M 20	2,5	3,55	5	7,1	3,35	2,5	5	3,75
FP4	M 24	4	5,6	8	11,2	5,6	4	8	6
FP 5	M 27	5,3	7,1	10,6	14	7,1	5,3	11,2	8
FP 6	M 30	6	8	12	16	8	6	12,5	9

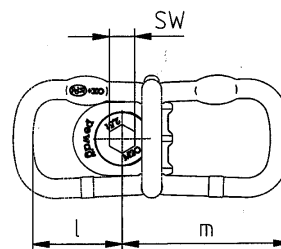
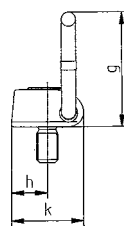
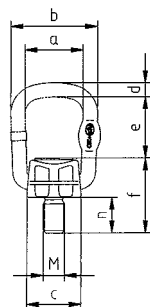
## PLAW Løftebeslag

## PLAW Lifting Point



Meget flad og ekstremt god.  
360° drejbar.  
Ring kan fastholdes i bestemt position.  
90° svingbar.  
Lav byggehøjde.

Very flat and extremely good.  
Rotates through 360°.  
Lockable member.  
Admissible swivel range of take-up member 90°.  
Very low profile.



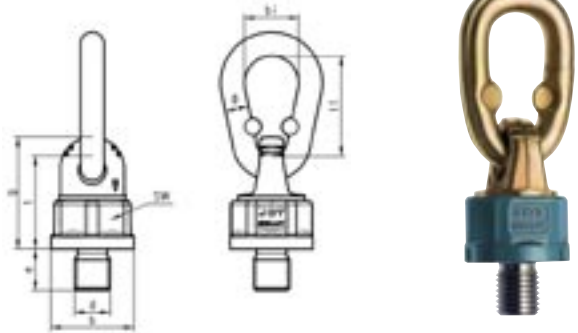
Art. No.	Type	Load cap. kg	Thread	Fastening torque Nm	a	b	c	d	e	f	g	h	k	l	m	n	SW	Weight kg
03-701351033	PLAW 0,63	630	M 10	40	54	81	50	13	57	70	107,5	33	67	60	113,5	33	17	0,93
03-701351633	PLAW 1,5	1.500	M 16	160	54	81	50	13	57	70	107,5	33	67	60	113,5	33	17	0,97
03-701352033	PLAW 2,5	2.500	M 20	300	54	81	50	13	57	70	107,5	33	67	60	113,5	33	17	1

Der tages forbehold for trykfejl og udgåede varer

## Svirveløjebolt / Screw-on Attachment Swivel

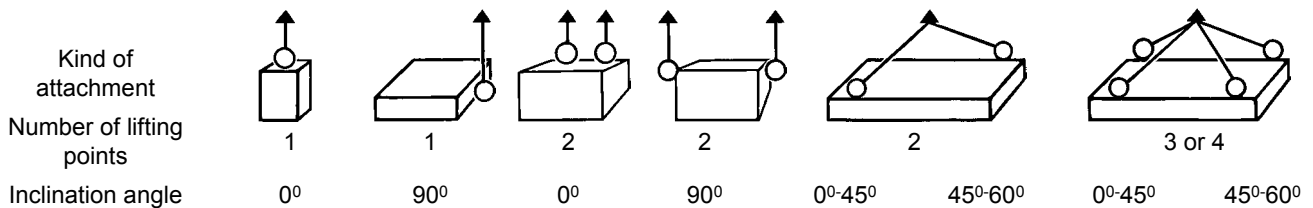
Stigning i WLL på mindst 25% mens man bibeholder de kendte funktionelle dimensioner fra TAWGK.  
 Nemmere at montere / afmontere takket være den smedede hexagon på svirvelens krop.  
 Markerede mærker forhindrer kæden i at kinke.  
 Korrosionsbeskyttelse vha. galvanisering, incl. de inderste områder..

Increase in working load limit of at least 25% while retaining the known functional dimensions of the TAWGK.  
 Easier to assemble / dismantle thanks to forged hexagon on the body of the swivel.  
 Crimped marks prevent the link from kinking.  
 Corrosion protection through galvanising, including the internal areas.



Art. No.	Designation	Diameters of thread mm d x e	Pitch	b mm	g mm	sw mm	t mm	Link Øxt, xb mm	Weight kg
03-70111001218	Theipa Point 0,7	M 12X18	1,75	36,5	48	34	41	13 x 55 x 32	0,43
03-70111011620	Theipa Point 1,4	M 16X20	2	36,5	48	34	41	13 x 55 x 32	0,44
03-70111022030	Theipa Point 2,5	M 20X30	2	52	67	46	57	16 x 70 x 34	0,98
03-70111042430	Theipa Point 4,0	M 24X30	3	57	75	50	63	18 x 65 x 45	1,35
03-70111063035	Theipa Point 6,7	M 30X35	3,5	70	94,5	65	78	20 x 85 x 45	2,51
03-70111103650	Theipa Point 10,0	M 36X50	4	81	106	75	86	23 x 115 x 60	3,76
03-70111124260	Theipa Point 12,5	M 42X60	4,5	81	111	75	92	28 x 140 x 65	5,25
03-70111154560	Theipa Point 15,0	M 45x60	4,5	104	127	90	106	28 x 140 x 70	7,25

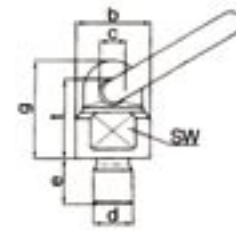
## Belastningstabel / Load Diagram



Code	WLL t	WLL t	WLL t	WLL t	WLL t	WLL t	WLL t	WLL t	WLL t
M 12 x 18	1,4	0,7	2,8	1,4	1,0	0,7	1,4	1,0	
M 10 x 18	1,0	0,5	2,0	1,0	0,7	0,5	1,0	0,75	
M 12 x 25	1,4	0,7	2,8	1,4	1,0	0,7	1,4	1,0	
M 14 x 20	2,0	1,0	4,0	2,0	1,4	1,0	2,12	1,5	
M 16 x 20	2,8	1,4	5,6	2,8	2,0	1,4	3,0	2,12	
M 16 x 30	2,8	1,4	5,6	2,8	2,0	1,4	3,0	2,12	
M 20 x 30	3,4	1,7	6,8	3,4	2,4	1,7	3,55	2,5	
M 24 x 30	3,4	1,7	6,8	3,4	2,4	1,7	3,55	2,5	
M 20 x 30	5,0	2,5	10,0	5,0	3,55	2,5	5,3	3,75	
M 20 x 40	5,0	2,5	10,0	5,0	3,55	2,5	5,3	3,75	
M 20 x 50	5,0	2,5	10,0	5,0	3,55	2,5	5,3	3,75	
M 20 x 70	5,0	2,5	10,0	5,0	3,55	2,5	5,3	3,75	
M 24 x 30	8,0	4,0	16,0	8,0	5,6	4,0	8,5	6,0	
M 24 x 45	8,0	4,0	16,0	8,0	5,6	4,0	8,5	6,0	
M 24 x 50	8,0	4,0	16,0	8,0	5,6	4,0	8,5	6,0	
M 30 x 35	8,0	4,0	16,0	8,0	5,6	4,0	8,5	6,0	
M 30 x 35	12,0	6,7	24,0	13,4	9,5	6,7	14,0	10,0	
M 30 x 40	12,0	6,7	24,0	13,4	9,5	6,7	14,0	10,0	
M 30 x 50	12,0	6,7	24,0	13,4	9,5	6,7	14,0	10,0	
M 30 x 60	12,0	6,7	24,0	13,4	9,5	6,7	14,0	10,0	

Der tages forbehold for trykfejl og udgåede varer

## Svirveløbbolt TAWGK / Screw-on Attachment Swivel TAWGK



Kompakt og let design - standard gevind  
 360° drejbar, link max. 180° svingbar.

Compact and light-weight design - commercial threads  
 360° swivelling, link max. 180° swing.

Art. No.	Code	Diameters of thread mm d x e	DIN 13 Pitch	b mm	c mm	g mm	sw mm	t mm	Joining link	Weight kg
03-70110083654	TAWGK 8	M 36 x 54	4,0	80	27	109	65	88	22 x 115 x 50	3,68
03-70110084263	TAWGK 8	M 42 x 63	4,5	80	27	109	65	88	22 x 115 x 50	3,92
03-70110103650	TAWGK 10	M 36 x 50	4,0	80	27	109	65	88	22 x 115 x 50	3,73
03-70110104250	TAWGK 10	M 42 x 50	4,5	80	27	109	65	88	22 x 115 x 50	3,89
03-70110104263	TAWGK 10	M 42 x 63	4,5	80	27	109	65	88	22 x 115 x 50	4,00
03-70110104872	TAWGK 10	M 48 x 72	5,0	80	27	109	65	88	22 x 115 x 50	4,21
03-70110154260	TAWGK 15	M 42 x 60	4,5	104	32	135	80	110	28 x 140 x 65	6,78
03-70110154560	TAWGK 15	M 45 x 60	4,5	104	32	135	80	110	28 x 140 x 65	6,84
03-70110154860	TAWGK 15	M 48 x 60	5,0	104	32	135	80	110	28 x 140 x 65	7,37
03-70110155678	TAWGK 15	M 56 x 78	5,5	104	32	135	80	110	28 x 140 x 65	7,56
03-70110156496	TAWGK 15	M 64 x 96	6,0	104	32	135	80	110	28 x 140 x 65	8,31

## Belastningstabel TAWGK / Load Diagram TAWGK

Kompakt og let design - standard gevind  
 360° drejbar, link max. 180° svingbar.

Compact and light-weight design - commercial threads  
 360° swivelling, link max. 180° swing.



Kæder og Fittings

Svirveløbsbolte

Kind of attachment	1		2		2		3 or 4		
	0°	90°	0°	90°	0°-45°	45°-60°	0°-45°	45°-60°	
Number of lifting points	1	1	2	2	2	2	3 or 4	3 or 4	
Inclination angle	0°	90°	0°	90°	0°-45°	45°-60°	0°-45°	45°-60°	
Code	Thread	WLL t	WLL t	WLL t	WLL t	WLL t	WLL t	WLL t	WLL t
TAWGK 8	M 30	12	8	24	16,0	11,2	8	16	11,8
TAWGK 8	M 36	15	10	30	20,0	14	10,0	21,2	15,0
TAWGK 10	M 36	15	10	30	20	14	10	21,2	15
TAWGK 10	M 42	15	10	30	20	14	10	21,2	15
TAWGK 10	M 48	15	10	30	20	14	10	21,2	15
TAWGK 15	M 42	18	12,5	36	25	17	12,5	25,0	18
TAWGK 15	M 45	22,4	15	45	30	21,2	15	31,5	22,4
TAWGK 15	M 48	22,4	15	45	30	21,2	15	31,5	22,4
TAWGK 15	M 56	23,6	16	47	31,5	22,4	16	33,5	23,6
TAWGK 15	M 64	25	17	50	33,5	23,6	17	35,5	25
TAWGK 20	M 64	25,0	20,0	50	40	28,0	20,0	42,5	30,0
TAWGK 25	M 72	31,5	25,0	63	50	33,5	25,0	50,0	37,5
TAWGK 25	M 80	31,5	25,0	63	50	33,5	25,0	50,0	37,5
TAWGK 30	M 90	40,0	31,5	80	63	42,5	31,5	63,0	47,5

Der tages forbehold for trykfejl og udgåede varer