



Wedge sockets are suitable for most constructions of wire ropes and have an efficiency rating of 80% the breaking strength of 6 x 19/6 x 37 EIPS grade wire rope if correctly installed. Sockets can be installed onsite quickly and easily by a competent trained person.

Assembly and Operating Safety:

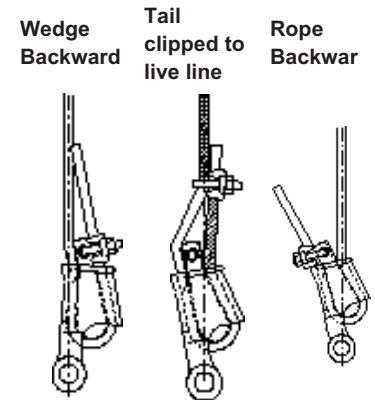
- Use only with standard 6 to 8 strand wire rope of designated size. For intermediate size rope, use next larger size socket (eg. 9/16" wire rope use a 5/8" socket). Welding of the tail on standard wire rope is not recommended. The tail length of the dead end should be a minimum of 6 rope diameters but not less than 6 inches.
- To use with Rotation Resistant wire ropes ensure that the dead end is welded, brazed or seized before inserting the wire rope into the wedge socket to prevent core slippage or loss of rope lay. The tail length of the dead end should be a minimum of 20 rope diameters but not less than 6 inches.
- Properly match socket, wedge and clip to wire rope size.
- Align live end of rope, with centre line of pin.
- Secure dead end section of rope.
- Tighten nuts on clip to recommended torque.
- Do not attach dead end to live end or install wedge backwards.
- Use a hammer to seat wedge and rope as deep into socket as possible before applying load.
- Apply first load to fully seat the wedge and wire rope in the socket. This load should be of equal or greater weight than loads expected in use.
- During use, do not strike the dead end section with any other elements of the rigging (called two blocking).



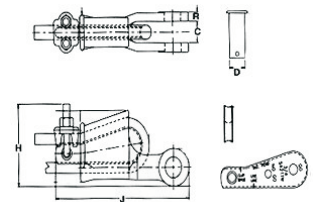
INSTALLATION CORRECT



INSTALLATION INCORRECT



Stock Code	Rope Size Inches	Dimensions - Inches				
		C	D	H	J	R
60WGE-S12CR	3/8	0.81	0.81	3.12	7.38	0.44
60WGE-S16CR	1/2	1.00	1.00	3.85	8.75	0.50
60WGE-S20CR	5/8	1.25	1.19	4.58	10.34	0.56
60WGE-S24CR	3/4	1.50	1.38	6.37	12.03	0.66
60WGE-S28CR	7/8	1.75	1.63	6.28	14.00	0.75
60WGE-S32CR	1	2.00	2.00	7.02	15.86	0.88
60WGE-S36CR	1 1/8	2.25	2.25	7.76	17.70	1.00
60WGE-S40CR	1 1/4	2.50	2.30	N/A	N/A	1.12





SPELTER SOCKETS

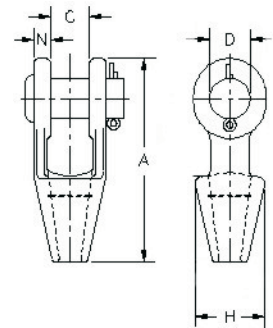
Spelter sockets are an excellent termination fitting as they offer 100% efficiency rating when installed by a qualified person to either 6 x 7, 6 x 19, or 6 x 37 IPS, EIPS, EEIP, RRL, FC or IWRC wire rope. Sockets are assembled with zinc or resin material, and are available as open or closed. Spelter sockets can be installed onsite, and can be reused if a magnetic particle test and visual inspection occurs.

Those inexperienced in the socketing process should not try to fabricate assemblies without first getting expert training. It is far better to leave fabrication of this type of assembly to Wesco Industries.



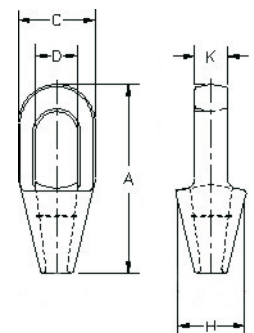
Open Spelter Sockets

Stock Code	Rope Size Inches	Dimensions - Inches				
		A	C	D	H	N
60OSP-G08CR	1/4	4.56	0.91	0.69	1.56	0.36
60OSP-G12CR	5/16 - 3/8	4.84	0.81	0.81	1.69	0.44
60OSP-G16CR	7/16 - 1/2	5.56	1.00	1.00	1.88	0.50
60OSP-G20CR	9/16 - 5/8	6.75	1.25	1.19	2.25	0.56
60OSP-G24CR	3/4	7.94	1.50	1.38	2.62	0.62
60OSP-G28CR	7/8	9.25	1.75	1.63	3.25	0.80
60OSP-G32CR	1	10.56	2.00	2.00	3.75	0.88
60OSP-G36CR	1 1/8	11.81	2.25	2.25	4.12	1.00
60OSP-G40CR	1 1/4 - 1 3/8	13.19	2.50	2.50	4.75	1.13
60OSP-G48CR	1 1/2	15.12	3.00	2.75	5.25	1.19
60OSP-G52CR	1 5/8	16.25	3.00	3.00	5.50	1.31
60OSP-G56CR	1 3/4 - 1 7/8	18.25	3.50	3.50	6.38	1.56



Closed Spelter Sockets

Stock Code	Rope Size Inches	Dimensions - Inches				
		A	C	D	H	K
60CSP-G08CR	1/4	4.50	1.50	0.88	1.56	0.50
60CSP-G12CR	5/16 - 3/8	4.88	1.69	0.97	1.69	0.69
60CSP-G16CR	7/16 - 1/2	5.44	2.00	1.16	1.88	0.88
60CSP-G20CR	9/16 - 5/8	6.31	2.63	1.41	2.38	1.00
60CSP-G24CR	3/4	7.56	3.00	1.66	2.75	1.25
60CSP-G28CR	7/8	8.75	3.63	1.88	3.25	1.50
60CSP-G32CR	1	9.88	4.13	2.30	3.75	1.75
60CSP-G36CR	1 1/8	11.00	4.50	2.56	4.13	2.00
60CSP-G40CR	1 1/4 - 1 3/8	12.12	5.30	2.81	4.75	2.25
60CSP-G48CR	1 1/2	13.94	5.33	3.19	5.25	2.50
60CSP-G52CR	1 5/8	15.13	5.75	3.25	5.50	2.75
60CSP-G56CR	1 3/4 - 1 7/8	17.25	6.75	3.75	6.38	3.00





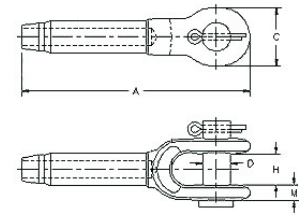
Swage sockets are suitable for either 6 x 19, or 6 x 37 IPS, EIPS, EEIP, RRL, and IWRC wire rope. Swage sockets have an efficiency rating of 100%. Sockets are forged from special bar quality carbon steel and are swaged (pressed) onto the wire rope using special dies in a large hydraulic press.

Swage sockets are commonly used for pendant ropes on cranes.



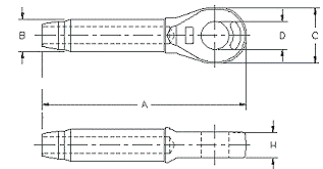
Open Swage Sockets

Stock Code	Rope Size Inches	Dimensions - Inches				
		A	C	D	H	M
60OSW-S08C	1/4	4.81	1.38	0.69	0.69	0.38
60OSW-S10C	5/16	6.25	1.62	0.81	0.81	0.47
60OSW-S12C	3/8	6.25	1.62	0.81	0.81	0.47
60OSW-S14C	7/16	7.81	2.00	1.00	1.00	0.56
60OSW-S16C	1/2	7.81	2.00	1.00	1.00	0.56
60OSW-S18C	9/16	9.50	2.38	1.19	1.25	0.68
60OSW-S20C	5/8	9.50	2.38	1.19	1.25	0.68
60OSW-S24C	3/4	11.56	2.75	1.38	1.50	0.78
60OSW-S28C	7/8	13.41	3.13	1.62	1.75	0.94
60OSW-S32C	1	15.47	3.69	2.00	2.00	1.06
60OSW-S36C	1 1/8	17.31	4.06	2.25	2.25	1.19
60OSW-S40C	1 1/4	19.06	4.50	2.53	2.50	1.22



Closed Swage Sockets

Stock Code	Rope Size Inches	Dimensions - Inches				
		A	B	C	D	H
60CSW-S08C	1/4	4.31	0.50	1.38	0.75	0.50
60CSW-S10C	5/16	5.44	0.77	1.62	0.88	0.67
60CSW-S12C	3/8	5.44	0.77	1.62	0.88	0.67
60CSW-S14C	7/16	6.91	0.98	2.00	1.06	0.86
60CSW-S16C	1/2	6.91	0.98	2.00	1.06	0.86
60CSW-S18C	9/16	8.66	1.25	2.38	1.25	1.13
60CSW-S20C	5/8	8.66	1.25	2.38	1.25	1.13
60CSW-S24C	3/4	10.28	1.55	2.88	1.44	1.31
60CSW-S28C	7/8	11.94	1.70	3.12	1.69	1.50
60CSW-S32C	1	13.56	1.98	3.63	2.06	1.75
60CSW-S36C	1 1/8	15.03	2.25	4.00	2.31	2.00
60CSW-S40C	1 1/4	16.94	2.53	4.50	2.56	2.25



- Larger sizes available upon request.